

# QuietCool Roof Mount Fan installation instructions

**A**

Installation for standard homes, manufactured homes and modular offices.

OR

For commercial buildings with acoustical drop ceilings.

(Minimum of 20" attic clearance required for these installations)

After determining where the fan(s) are going to be installed, make sure the ceiling box / grille has at least a minimum of 14 1/4" between the rafters or joists using an electronic stud finder.

**IMPORTANT - Make sure you have at least 20" of clearance between ceiling and roof.**

Cut out ceiling at 14 1/4" x 14 1/4" square prior to cutting out roof. Recheck location of the interior ceiling box placement. You can drill a small hole through the roof to help locate placement of roof cut out. Make sure the duct is going to be long enough to join roof fan and ceiling box. Make your cut through the roof at 14 1/4" x 14 1/4" square.

Run electrical wiring to roof cut-out and make connections to fan(s). Attach duct to fan and then place roof mount unit in cut out section. Fasten to roof with appropriate fasteners. Flash in fan curb using appropriate weatherproofing method and materials based on roof type. Install preferred controls.

## Installation overview

Find location

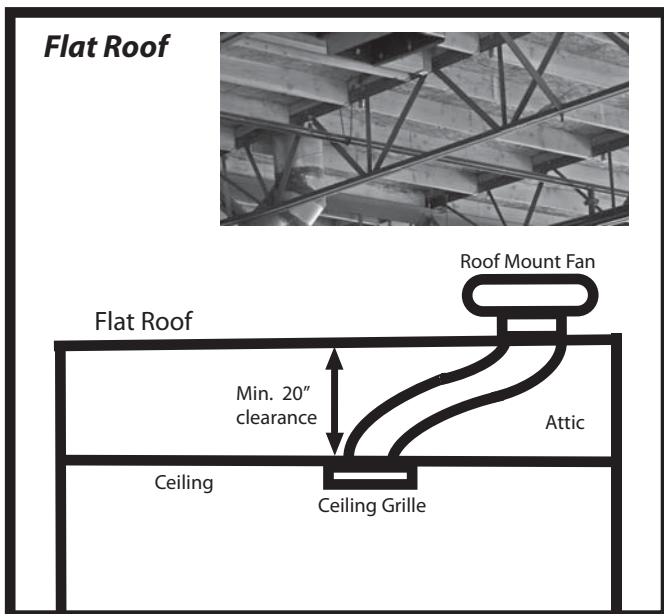
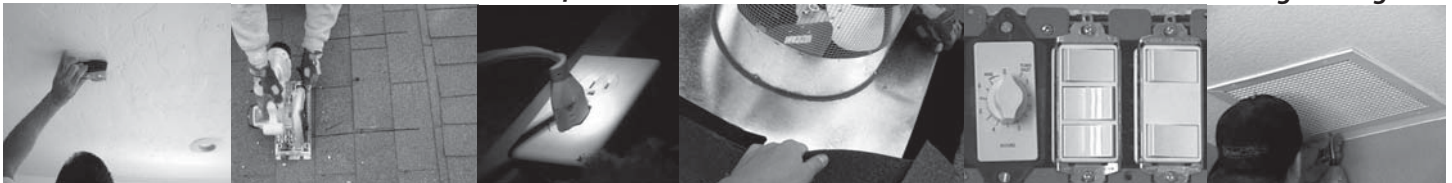
Cut out roof

Route power

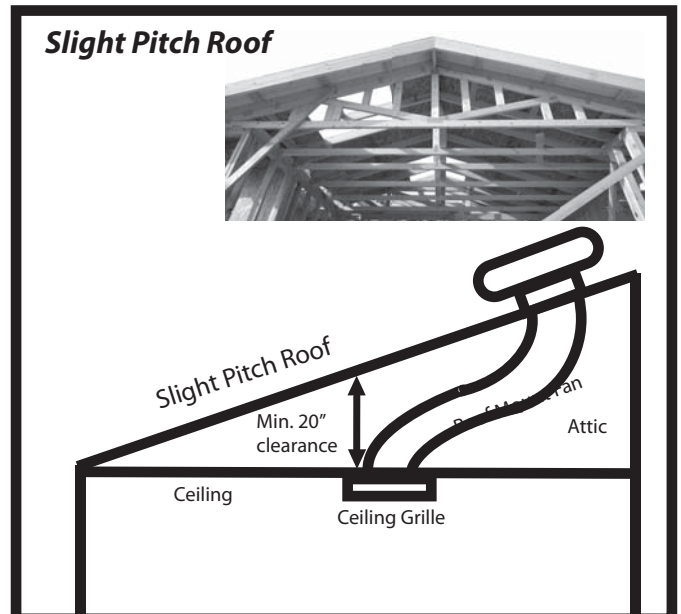
Install fan

Install controls

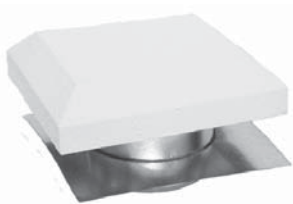
Install duct, ceiling box & grille



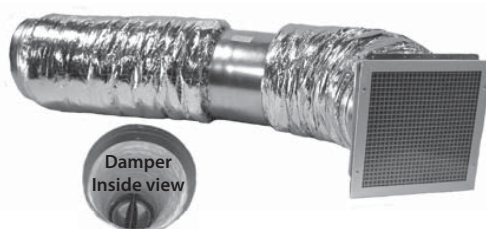
OR



## Components required for installation



Roof Mount Fan



In-line Butterfly Damper and Grille Kit



Hard Wire or Remote Controls